



# COMPANY PROFILE

STRENGTH THROUGH  
ADVANCED TECHNOLOGY

2024

# WELCOME NOTE

Welcome to Bolt Mining Solutions! We are excited to introduce ourselves as a pioneering company in the mining industry, committed to delivering innovative and reliable solutions that enhance operational efficiency and safety.

Our commitment to providing quality mining equipment and accessories for client satisfaction is the cornerstone of our success. As you explore our company profile, you'll discover the passion, expertise, and dedication that drive us to deliver exceptional solutions in the world of mining.

Thank you for considering us as your trusted partner in mining. We look forward to the opportunity to collaborate with you and turn your unique vision into reality.



# TABLE OF CONTENT

No	Content Title	Page
01	About Our Company	04
02	Our Company Information	05
03	Company Mission	06
04	Company Vision	07
05	Company Core Values	08
06	Company Philosophy	09
07	Why Choose Us?	10
08	Company Core Services	11

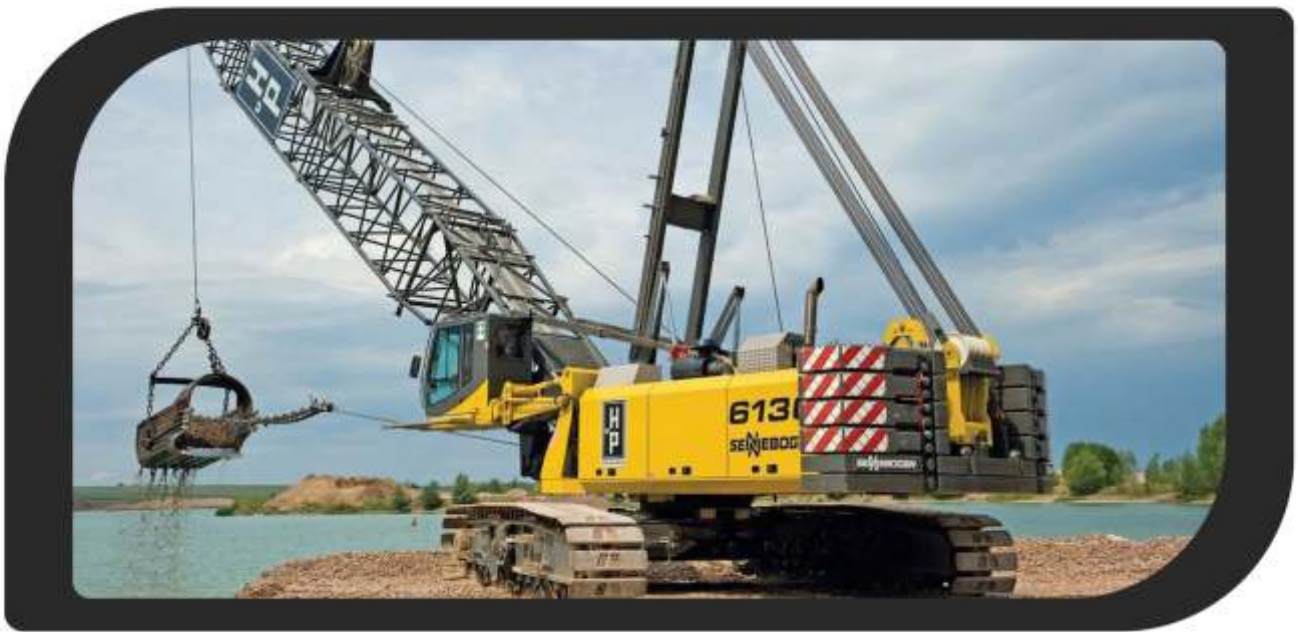
## ABOUT US

Bolt Mining Solutions is a dynamic and forward-thinking company dedicated to providing comprehensive solutions to the mining industry. With a commitment to innovation, efficiency, and safety, we specialize in delivering high-quality equipment, essential accessories, and advanced technologies designed to enhance modern mining operations.



Built on a foundation of industry expertise and technological advancement, Bolt Mining Solutions strives to meet the evolving demands of the mining sector. Our approach is centered on reliability, performance, and sustainability, ensuring that our clients have access to cutting-edge solutions that drive operational excellence.

Our mission is to empower mining operations with state-of-the-art tools and resources, fostering growth, efficiency, and long-term success. We take pride in our unwavering commitment to quality, customer satisfaction, and continuous improvement, positioning ourselves as a trusted partner in the mining industry.



## COMPANY INFORMATION

We are excited to partner with you, providing innovative, high-quality solutions to enhance your mining operations. Here is our company information.

Company Name: Bolt Mining Solutions

Tagline: Strength Through Advanced Technology

Established: 2024

Headquarters: PlotA14 Sub 12T of 380a Silverest Chongwe, Lusaka Zambia

Email: [info@boltminingsolutions.com](mailto:info@boltminingsolutions.com)

Website: [www.boltminingsolutions.com](http://www.boltminingsolutions.com)

Bolt Mining Solutions is committed to enhancing mining operation globally through advanced technology for customer satisfaction.

## OUR MISSION

Our mission is to empower the mining industry with innovative equipment and essential accessories, delivering exceptional quality and reliable solutions that enhance operational efficiency and safety.

At Bolt Mining Solutions, our mission is to drive the mining industry forward by equipping it with the latest innovations and highest-quality products. We are dedicated to providing our clients with advanced equipment and accessories that not only meet but exceed industry standards, ensuring that their operations are both efficient and safe.

Our approach is centered on understanding the unique challenges faced by our clients and offering customized solutions that address their specific needs. By fostering a culture of continuous improvement and technological advancement, we aim to provide products that enhance productivity and streamline operations, reducing downtime and increasing profitability.



Safety is paramount in the mining industry, and our mission includes a steadfast commitment to delivering solutions that prioritize the well-being of workers and the environment. Through rigorous testing and quality control, we ensure that our equipment and accessories are reliable and safe, helping our clients maintain secure and compliant operations.

Ultimately, our mission is to be more than just a supplier; we strive to be a partner in our clients' success, providing the tools and support they need to achieve their goals and drive the mining industry towards a brighter, more sustainable future.

## OUR VISION

Our vision is to be the leading provider of comprehensive mining solutions, recognized for our commitment to technological advancement, sustainability, and unparalleled service excellence.\



We envision a future where Bolt Mining Solutions sets the industry standard for excellence. Our goal is to not only meet but exceed the expectations of our clients through continuous innovation and by staying at the forefront of technological advancements. By integrating cutting-edge technology into our products and services, we aim to revolutionize the mining industry, making operations safer, more efficient, and more sustainable.

Our commitment to sustainability drives us to adopt and promote environmentally responsible practices. We strive to reduce our ecological footprint and contribute to the long-term health of the planet while supporting our clients in achieving their sustainability goals.

Excellence in service is a cornerstone of our vision. We aim to build lasting relationships with our clients by providing unparalleled support, tailored solutions, and consistently delivering on our promises. By maintaining the highest standards of integrity, reliability, and customer focus, we aspire to be the trusted partner of choice in the mining sector.



## CORE VALUES

### INNOVATION

We continuously seeking and implementing cutting-edge technologies to improve mining operations and drive industry progress.

### CUSTOMER FOCUS

We prioritize our client's needs by offering tailored solutions and exceptional support to help them achieve their goals.

### RELIABILITY

We provide high-quality products and services that clients can depend on, ensuring consistent performance and safety

### INTEGRITY

We conduct business with transparency, honesty, and ethical practices, building trust with clients and partners.

### SUSTAINABILITY

We are committed to environmentally responsible practices, aiming to minimize our impact and contribute to the long-term health of the mining industry and the planet.

## COMPANY PHILOSOPHY

At Bolt Mining Solutions, we believe in the power of technology to transform the mining industry. Our philosophy is centered on providing innovative, reliable, and sustainable solutions that not only meet but exceed our clients' expectations. We are dedicated to advancing the industry through continuous improvement, ethical practices, and a deep commitment to our customers' success.





## WHY CHOOSE US?



### TECHNOLOGICAL EXCELLENCE:

We leverage the latest advancements in technology to deliver state-of-the-art solutions tailored to meet the specific needs of



### COMMITMENT TO QUALITY:

Our products and services adhere to the highest standards of quality and reliability, ensuring that our clients receive only the



### CUSTOMER-CENTRIC APPROACH:

We work closely with our clients to understand their unique requirements and provide customized solutions that drive their



### SUSTAINABLE PRACTICES:

We promote environmental sustainability and reducing our ecological footprint, contributing to the future of mining and the

# OUR SERVICES

At Bolt Mining Solutions, we are dedicated to providing robust, reliable, and innovative solutions to meet the diverse needs of the mining industry.

Our services and products are categorized into three major areas:

## MINING EQUIPMENT

We supply world-class machinery essential for efficient and effective mining operations. Our equipment includes:

- ✓ Bolters
- ✓ Load Haul Dumpers (LHDs)
- ✓ Scalars
- ✓ Articulated Dump Trucks (ATDs)
- ✓ Rigid Dump Trucks
- ✓ Excavators
- ✓ Dragline Excavators
- ✓ Pickups & Small Flatbed Trucks
- ✓ Tipper Trucks/Dump Trucks
- ✓ Flatbed Trucks with Containers
- ✓ Bulk Haulage Trucks
- ✓ Tanker Trucks
- ✓ Enclosed Trailers

## MINING ACCESSORIES

Our range of accessories supports mining operations and enhances the safety and efficiency. These include;

- ✓ Drill Bits
- ✓ Mining Drill Rigs
- ✓ Hydraulic Rock Drills
- ✓ Bucket Teeth
- ✓ Mining Lamps
- ✓ Protective Gear
- ✓ Hydraulic Hoses and Fittings
- ✓ Dust Suppression Systems
- ✓ Portable Generators
- ✓ Wear-Resistant Steel Piping Systems (abrasion & impact resistant)

### Specialized Accessories:

#### [A] Concrete Pumping Systems

- *Truck-Mounted Concrete Pumps*
  - Standard Weight Boom Pipelines
  - Lightweight Pipes

#### • *Laydown & High-Rise Pipelines*

- High-Pressure Pipelines
- Shotcrete Pipelines

#### • *Couplings and Gaskets*

#### [B] Pneumatic Transport of Bulk Material

#### • [C] Pulp & Paper Accessories

- Distribution Screens
- Bark Hammers | Rotors | Grates
- Conveying Screws
- Pneumatic Conveyance

## MINING SERVICES

We provide specialized construction and engineering services within the mining sector to support operational efficiency and infrastructure development.

- ✓ Building and Housing
- ✓ Civil Engineering Works
- ✓ Road Works (including overburden stripping)
- ✓ Electrical, Instrumentation & Telecommunication
- ✓ Mechanical Engineering Works
- ✓ Quarrying (drilling, blasting, crushing)
- ✓ Mining & Exploration of Minerals

## STRENGTH THROUGH ADVANCED TECHNOLOGY



# B150S

## CONCRETE BATCH PLANT

The B150S is a high-capacity - DE cumulative Concrete Batch Plant, the most efficient batch plant across applications.

Rugged and versatile, the B150S offers the field-tested reliability required for the toughest projects around the globe.

The B150S concrete batch plant is designed and built to Bolt Mining Solution's exacting standards delivering first in class mobility, ease of set up and performance – with \*achievable batching times of 2-3 minutes per cycle\*. This high-performance system, offers a condensed footprint, meant to be fed by a front-end loader, without the need for extensive staging or concrete foundations. A concrete pad base or hard surface is ideal. Easy modular set up ensures that your B150S gets straight to work with no hassle.

### Key Features

- ✓ **Bömatic Automation**
- ✓ **Easy, modular set up**
- ✓ **Condensed footprint**
- ✓ **Highly portable**
- ✓ **150yds – 114.6m<sup>3</sup>/hour**
- ✓ **Easy to operate**
- ✓ **Indoor – outdoor setup**

## STRENGTH THROUGH ADVANCED TECHNOLOGY



# B100TS

CONCRETE BATCH PLANT

The B100TS is a high-capacity – Auger powder dispatch Mobile 100 Ton Cement powder silo, the most efficient powder transfer across applications.

Rugged and versatile, the B100TS offers the field-tested reliability required for the toughest projects around the globe.

The B100TS paired with our mobile concrete batch plant is designed and built to Böhlinger's exacting standards delivering first in class mobility, ease of set up and performance – with

\*achievable batching times of 2-3 minutes per cycle\*.

This high-performance system offers a condensed footprint, meant to be fed by a front-end loader, without the need for extensive staging or concrete foundations.

Quick one hour setup times ensure that your B100TS gets straight to work with no hassle

### Key Features

- ✓ **Twin Augers**
- ✓ **2 X 50 Ton Independent Silos**
- ✓ **No Cranes Required**
- ✓ **Highly portable**
- ✓ **Dust Collectors**
- ✓ **Easy to operate**

## STRENGTH THROUGH ADVANCED TECHNOLOGY



The B100S is a high-capacity - DE cumulative Concrete Batch Plant, the most efficient batch plant across applications.

Rugged and versatile, the B100S offers the field-tested reliability required for the toughest projects around the globe.

The B100S concrete batch plant is designed and built to Bolt Mining Solution's exacting standards delivering first in class mobility, ease of set up and performance – with \*achievable batching times of 2-3 minutes per cycle\*. This high-performance system, offers a condensed footprint, meant to be fed by a front-end loader, without the need for extensive staging or concrete foundations. A concrete pad base or hard surface is ideal. Easy modular set up ensures that your B100S gets straight to work with no hassle.

# B100S

## CONCRETE BATCH PLANT

### Key Features

- ✓ **Bömatic Automation**
- ✓ **Easy, modular set up**
- ✓ **Condensed footprint**
- ✓ **Highly portable**
- ✓ **100yds – 76.45m<sup>3</sup> /hour**
- ✓ **Easy to operate**
- ✓ **DE Cumulative**

## STRENGTH THROUGH ADVANCED TECHNOLOGY



The B120 is a high-capacity - DE cumulative Concrete Batch Plant, the most efficient batch plant across applications.

Rugged and versatile, the B120 offers the field-tested reliability required for the toughest projects around the globe.

The B120 concrete batch plant is designed and built to Bolt Mining Solution's exacting standards delivering first in class mobility, ease of set up and performance – with \*achievable batching times of 2-3 minutes per cycle\*. This high-performance system, offers a condensed footprint, meant to be fed by a front-end loader, without the need for extensive staging or concrete foundations. Quick one hour setup times ensure that your B120 gets straight to work with no hassle.

# B120

## CONCRETE BATCH PLANT

### Key Features

- ✓ **Bömatic Automation**
- ✓ **Easy, modular set up**
- ✓ **Condensed footprint**
- ✓ **Highly portable**
- ✓ **100yds – 76.45m<sup>3</sup> /hour**
- ✓ **Easy to operate**
- ✓ **DE Cumulative**

## STRENGTH THROUGH ADVANCED TECHNOLOGY



# B943-S

## CONCRETE BATCH PLANT

The Böhlinger B943-S offers optimum maneuverability in difficult to reach sites. Primarily used in medium-large tunnel work, slope consolidation, and hydroelectric projects.

Simple to operate, cross motion, stabilizers, four/two wheel drive, ROPS/FOPS canopy.

Proudly incorporating OCMER wet and dry concrete sprayer & arm technology for precise remote control of shotcrete applicator head.

Experience the progress with our latest innovation.

### Key Features

- ✓ OCM-068 UNIVERSAL Dose
- ✓ Synchronized Chemical Admix Dosing Unit
- ✓ Hydraulic Rotor Clamping System, Hopper Overturn, & Rotor's Lift.
- ✓ High Output
- ✓ RAPIDO 180-degree arm
- ✓ CAT Drivetrain w/ OCMER System interfaced w/ Böhlinger Technology
- ✓ Simplicity in Operation
- ✓ Unmatched Reliability

# B50-C TRACK CONE CRUSHER



CAT 320 UNDERCARRIAGE

HEAVY DUTY I BEAM CHASSIS



# B50-C TRACK CONE CRUSHER



# B50-i TRACK IMPACT CRUSHER



Customer Value Agreement



Extended Component life



Extended Oil Changes



Replaceable Bearings



Improved Technology



Increased Serviceability



# B50-i TRACK IMPACT CRUSHER



# B50-J TRACK JAW CRUSHER



Customer Value Agreement

Extended Component life

Extended Oil Changes

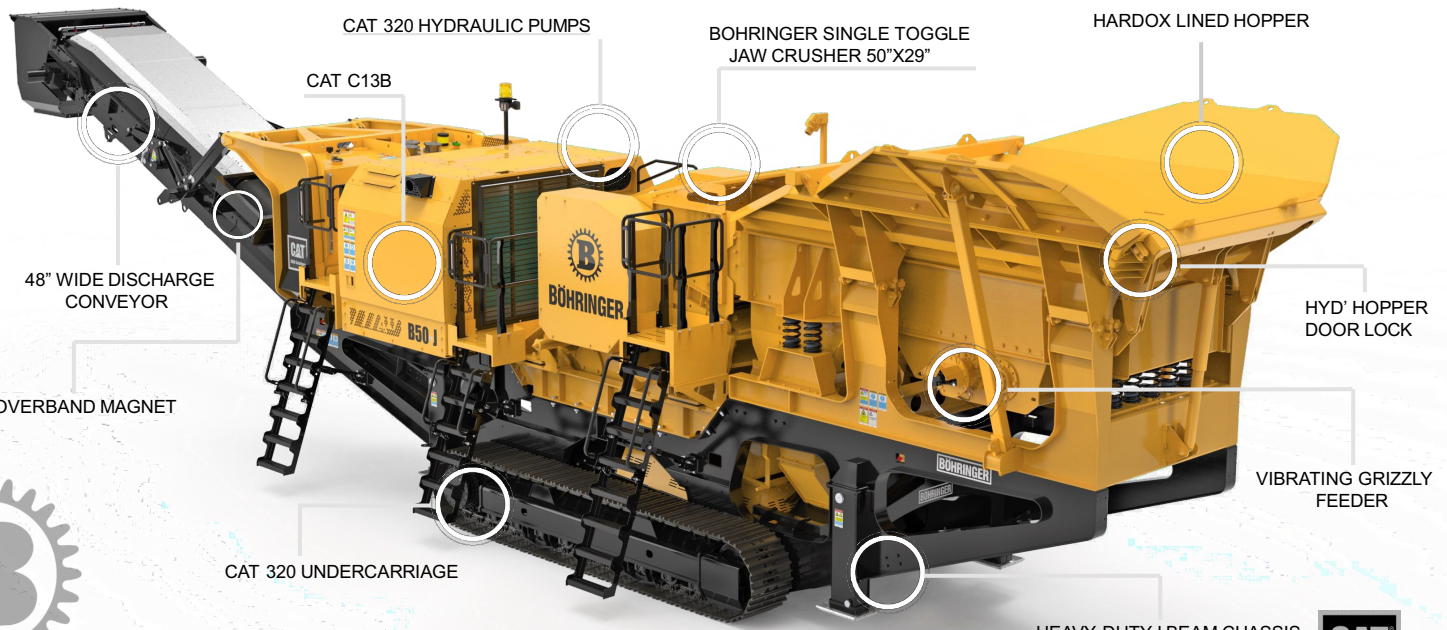
Replaceable Bearings

Improved Technology

Increased Serviceability



# B50-J TRACK JAW CRUSHER



CAT 320 HYDRAULIC PUMPS

BOHRINGER SINGLE TOGGLE JAW CRUSHER 50"X29"

HARDOX LINED HOPPER

CAT C13B

48" WIDE DISCHARGE CONVEYOR

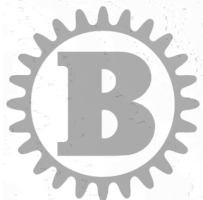
HYD' HOPPER DOOR LOCK

OVERBAND MAGNET

VIBRATING GRIZZLY FEEDER

CAT 320 UNDERCARRIAGE

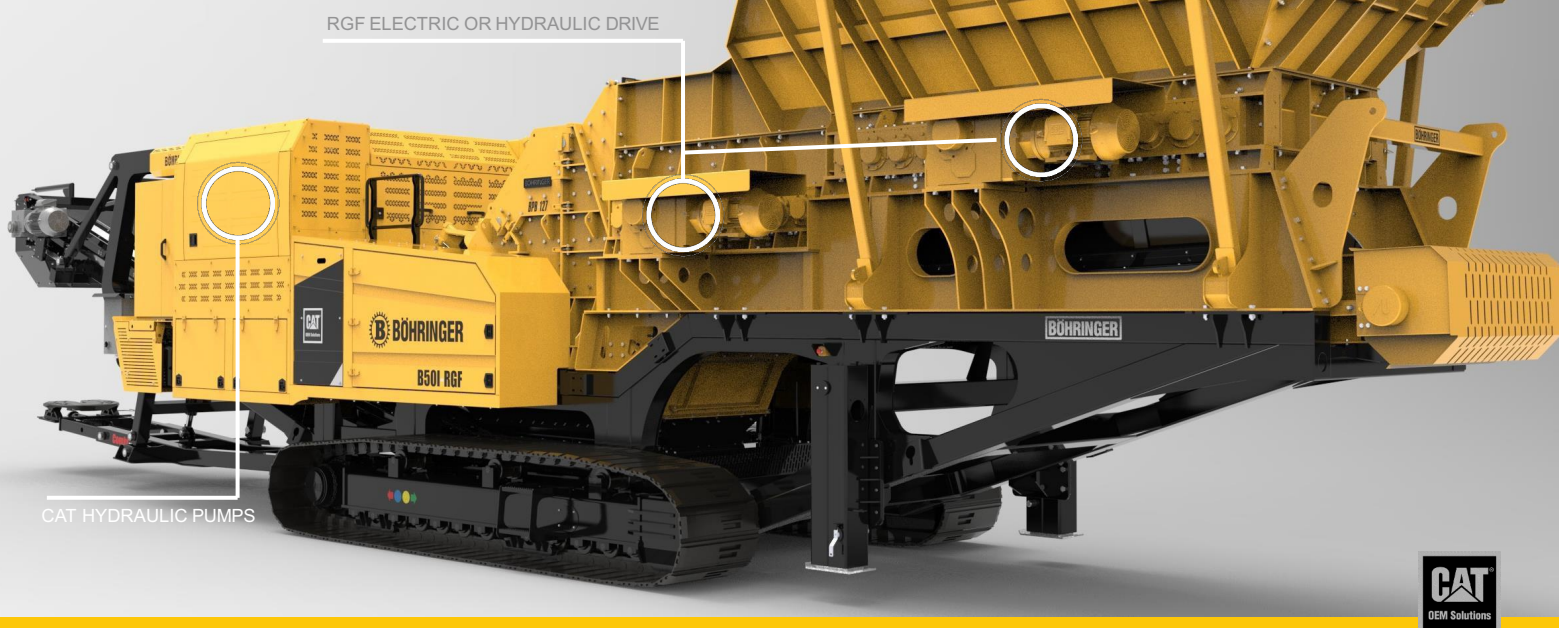
HEAVY DUTY I BEAM CHASSIS



# B50-iRGF TRACK IMPACT CRUSHER RGF



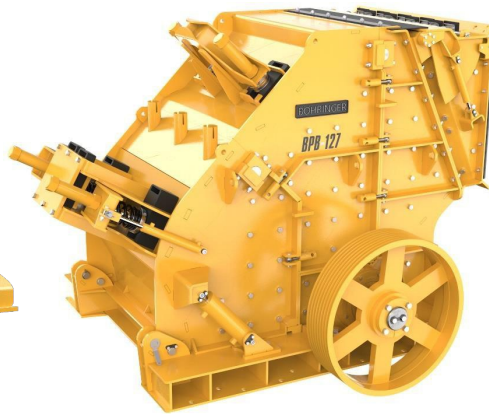
# B50-iRGF TRACK IMPACT CRUSHER RGF



# CHAMBERS



**BBB 127 JAW**



**BPB 127 IMPACT**



**BKB 300C CONE**



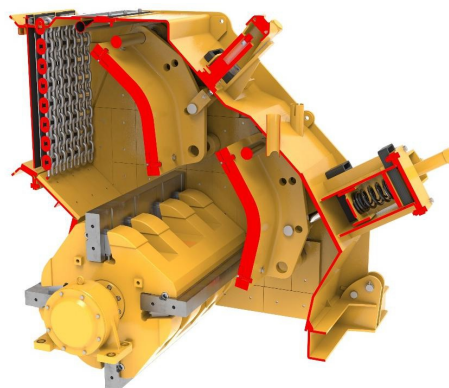
# CHAMBERS

cross section



**BBB 127 JAW**

50"X 29" OPENING



**BPB 127 IMPACT**

50"X35"-50" OPENING



**BKB 300C CONE**

44"



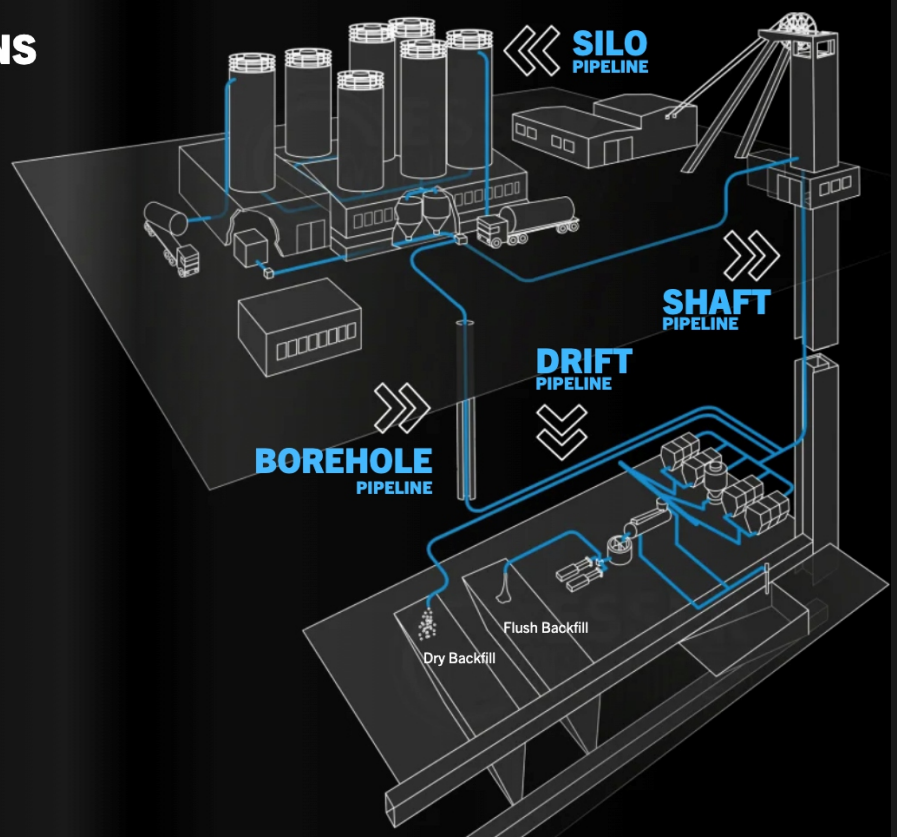
# APPLICATION OF OUR PIPELINES

## MINING PLANT APPLICATIONS SURFACE & UNDERGROUND

### Backfill material or building materials for use underground

During the extraction of raw materials, cavities are created underground. Depending on the use, these must be stabilized if the route is still used for access to the mining area. For this purpose, mixing plants and pumps are used underground to produce and pump concrete. The plants are supplied with the required materials by pneumatic conveyance and are delivered through a pipeline laid in the shaft or in a borehole.

Tailings can also be pneumatically conveyed underground as backfill material. Depending on the type of backfill, this dry material is either placed directly or processed further underground for flushing backfill.





## SPARE PARTS FOR BELOW BRANDS



## OEM BRANDS WE PROVIDE





# ENGINE PARTS



**Starter Motors**



**Cylinder Heads**



**Cylinder Blocks**



**Bearings**



**Fan blades**



**Injectors**



**Pistons**



**Radiators**



**pump**



**Turbos**



**Gasket sets**



**Rods**



## HYDRAULIC SYSTEMS



Hydraulic Fan Motors



Hydraulic pumps



Cylinders



Hoses and couplings



Control units



Hydraulic Barrels & Pistons



Service kit

## DIFFERENTIAL



Gears and shafts



Complete Reman.



Retainers



Pinion



Shaft assys



Bearings



# TRANSMISSION



Pistons



Gear Pump



Clutches



Gear sun



Stators



Turbines



Carriers



Bolts



Plates



Seals



Springs

# CHASSIS



GLASSES



BUSHINGS



PADS



PIMS



BOGIES



## FILTERS



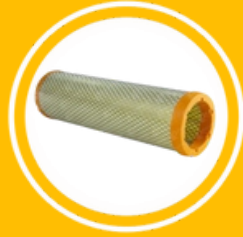
AC filter



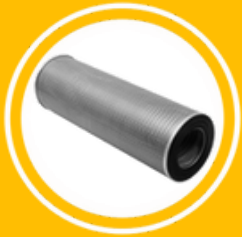
Outer filters



Fuel filter



Inner Air filter



Hydraulic filter



Water separator



Oil filter



Transmission filter

## UNDERCARRIAGE & COMPONENTS



Track Shoes



Rollers



Track Chains



Sprockets



Buckets



Tooth

# USED CATERPILLAR EXCAVATORS

No.	Machine Type	Serial No.	Hours of Use	Manufacturing Date
1	305.5	GZ501365	729	Jan. 2024
2	305.5E2	WE213499	4148	Dec. 2020
3	305.5E2	WE216148	5500	Dec. 2020
4	312GC	LHR10177	437	Jun. 2024
5	312GC	LHR20051	672	Dec. 2024
6	313D2GC	MTM01343	4553	Jan. 2020
7	320GX	GWX40076	5005	2024
8	320GX	TNG01524	2643	Mar. 2021
9	320GC	RGJ00990	5359	2021
10	323GC	WME10008	5195	Apr. 2023
11	323GX	WGT00598	2659	2021
12	323D2L	PJP00743	2030	Apr. 2014
13	336GC	JFW20172	4736	Jan. 2021
14	336GC	JFW20229	5596	2021
15	336GC	JFW20583	5370	Mar. 2021
16	336GC	JFW20617	3271	Jan. 2021
17	336GC	JFW21919	4731	Jan. 2022
18	336GC	JFW21928	3158	2022
19	336	NDW10043	3848	Jan. 2023
20	336	NDW20062	3181	Jan. 2024
21	336	NDW20267	1644	May. 2024
22	336	NDW20128	4943	Jan. 2024
23	336	NDW10084	3206	2023
24	336	NDW30051	1381	2024
25	336	NDW20069	5434	2024
26	349	RBY20450	7647	Feb. 2021
27	349	RBY00265	8229	2019
28	350	ZSE00107	4560	2021
29	350	TYS10124	3446	2023
30	355FG	GKH10001	2017	2023
31	655F	5B301005	636	Feb. 2024
32	323GC	FJM00896	6310	2021



### CARRIER ROLLER



### IDLER



#### SUITABLE MODEL

HITACHI	KATO
DAEWOO	KUBOTA
KOMATSU	IHISCE
HYUNDAI	CASE
VOLVO	LIEBHERR
CATERPILLAR	DOOSAN
KOBELCO	SANYO
SUMSUNG	YUCHAI
MITSUBISHI	GUIYANG
SHANTUI	SANY

Our products are according to the standard of OEM manufacture

### SPROCKET



SUITABLE MODEL	
HITACHI	KATO
DAEWOO	KUBOTA
KOMATSU	IHISCE
HYUNDAI	CASE
VOLVO	LIEBHERR
CATERPILLAR	DOOSAN
KOBELCO	SANYO
SUMSUNG	YUCHAI
MITSUBISHI	GUIYANG
SHANTUI	SANY

Our products are according to the standard of OEM manufacture



### TRACK ROLLER



SUITABLE MODEL	
HITACHI	KATO
DAEWOO	KUBOTA
KOMATSU	IHISCE
HYUNDAI	CASE
VOLVO	LIEBHERR
CATERPILLAR	DOOSAN
KOBELCO	SANYO
SUMSUNG	YUCHAI
MITSUBISHI	GUIYANG
SHANTUI	SANY

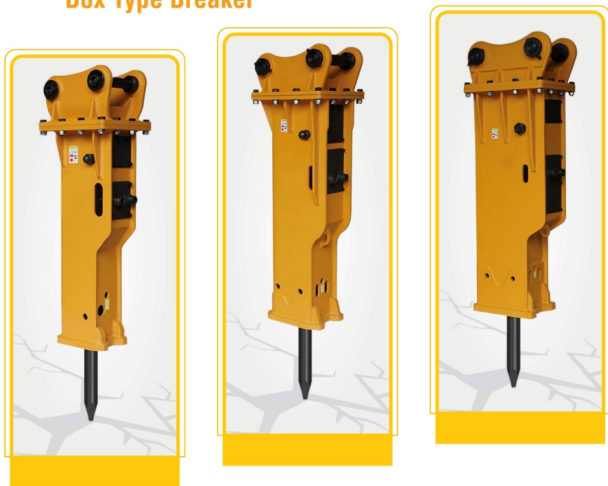
Our products are according to the standard of OEM manufacture



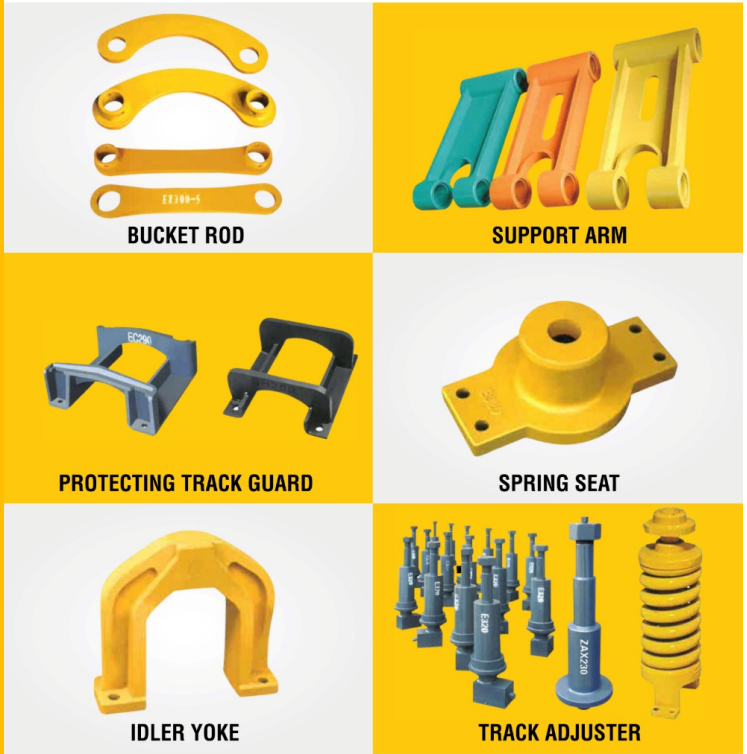
**TRACK LINK ASSY**



**Box Type Breaker**



**SPARE PARTS**



**TRACK LINK ASSY**



**HIGH WEAR-RESISTANT PIPELINE SYSTEMS  
FOR THE PNEUMATIC TRANSPORT OF BULK MATERIALS**









## CONTACT US



+260 966 9620 62



[info@boltminingsolutions.com](mailto:info@boltminingsolutions.com)



PlotA14 Sub 12T of 380a Silverest Chongwe, Lusaka Zambia

**STRENGTH THROUGH  
ADVANCED TECHNOLOGY**